



Mulgrave Road, Sutton

The **PERSONAL** Agent

£250,000

Leasehold

- One Bedroom Purpose Build Apartment
- Bright Reception Room
- Kitchen And Bathroom
- Ideal For First Time Buyers
- Walking Distance To Sutton Station
- Popular Residential Block
- Long Lease
- No Onward Chain



The Personal Agent are delighted to welcome to the market this spacious and well presented one bedroom first floor apartment set in a secluded and sought after development.

The property itself boasts a welcoming entrance which offers access to a bright reception room, a double bedroom, modern bathroom along with a separate kitchen. With a long lease and low service

charges we really do recommend your earliest viewing to avoid missing out on this chain free apartment which will attract high levels of interest.

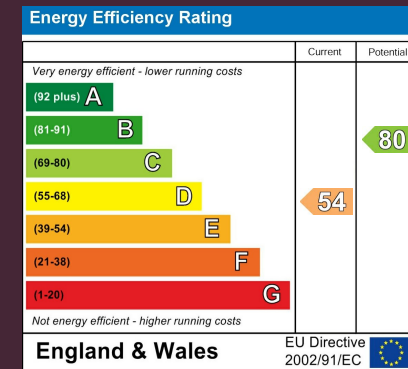
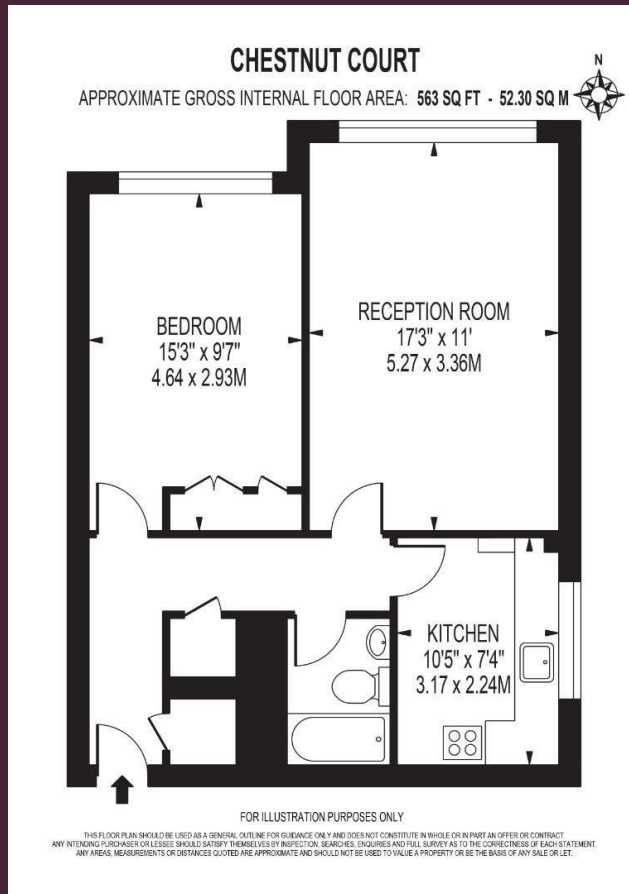
The property boasts easy access to London Waterloo from Sutton Railway Station (Approx. 28 minutes, Zone 5) and Cheam Railway Station (Approx. 32 minutes, Zone 5). The local area has outstanding grammar schools located within close proximity, such as Nonsuch High School

for Girls and Sutton Grammar School.

Tenure - Leasehold
Council tax band - C







EPSOM OFFICE
2 West Street
Epsom, Surrey, KT18 7RG
01372 745 850

STONELEIGH/EWELL OFFICE
62 Stoneleigh Broadway
Stoneleigh, Surrey, KT17 2HS
020 8393 9411

BANSTEAD OFFICE
141 High Street
Banstead, Surrey, SM7 2NS
01372 333699

LETTINGS & MANAGEMENT
163 High Street
Epsom, Surrey, KT19 8EW
01372 726 666



The Personal Agent Ltd. Registered office: 2A Boston Rd, Henley-on-Thames RG9 1DY.
Registered in England No. 4398817.



Please Note: Whilst every attempt has been made to ensure the accuracy of the floorplans contained here, measurements of doors, windows and room areas are approximate and no responsibility is taken for any error, omission or mis-statement. These plans are for representation purposes only and should be used as such by and prospective purchaser. The services, systems and appliances listed in the specification have not been tested by The Personal Agent and no guarantee as to their operating ability or their efficiency can be given. All images and text used to advertise our properties are for the sole use of The Personal Agent Ltd.

